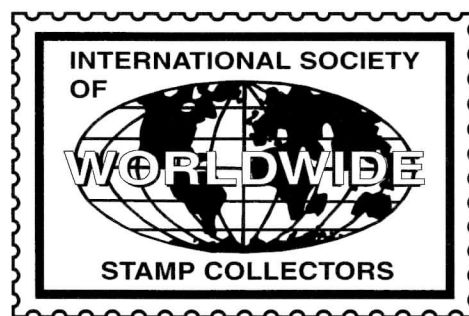


The Circuit

July/August 2007 • Volume 25 No. 4



Affiliate of: APS (#151) & ATA (#89)

www.iswsc.org

The Official Journal of the International Society of Worldwide Stamp Collectors

President's Column

by Joanne Berkowitz (#98)
ISWSC President

A medical meeting took me to San Diego and I had the pleasure of spending an evening with Aubrey Dunne, our founder. Aubrey has a unique approach to collecting worldwide stamps. He never pays more than 5 cents ("well-maybe 5.9 cents") per stamp.

Naturally, many of his stamps are worth a great deal more, since he can get a collection where the average price is 5 cents. But for those who say that worldwide collecting is too expensive, I say you just need to be creative about how you collect. Aubrey, a lifelong collector, must have a hundred or more albums.

Along with spending a bit of time looking at his wonderful collection, we also went to the local philatelic library. Maintained by the devoted service of a small cadre of collectors and supported by a donation from the estate of a local collector who gave his collection to the library, this is a small jewel of a library. I browsed the books and talked with the folks who were busy swapping stamps and stories. It was a wonderful evening and a great break from the day's meetings.

Aubrey suggested that the club be the definer or arbiter of the question "What is a stamp?" So I will pose that question to you all. To be called a postage stamp, must it have gone through the mail? Or have been issued with the intent of going through the mail? If a stamp is printed in another country, never saw the light of day in the country for which it was issued and never was used for anything other than philatelic first day covers and CTO's, is that a true postage stamp? If it pays tax on anything other than mailed items, is it a postage stamp?

If you look at various stamp catalogues, you will see that each publisher has a different definition of a stamp worthy of inclusion in their catalogue. We may not all come to the same conclusion but it would be fun to see where we can get on our own definition.

Thank you to Joe Palko, Duncan Koller, Rick Simpson, Bill Kiepora and any others of you I may have forgotten who have agreed to write letters on behalf of the club. We have already had at least one new member as a result and I hope for many more. We still need letter writers, so write or email me and I will send you mailing labels.

I hope you are all having a wonderful summer.



Another Way to Promote ISWSC

by Rick Simpson (#1703)
ISWSC Webmaster

Quite a few of our members are "vest pocket" dealers or eBay sellers. If you are one of these, why not encourage the folks you do business with to join ISWSC?

Often, all it takes is encouragement to take a look

at our website, which gives plenty of reasons for prospective members to join our organization. For those correspondents who do not use the Internet, our Executive Director, Terry Myers, has a packet of info on ISWSC he can send to any requestors via USPS.

Continued on page 9

ISWSC BOARD MEMBERS**President:**

Joanne Berkowitz (#98)
125 43rd Street
Sacramento, CA 95819-2101 – USA
joannebe@pacbell.net

Executive Director:

Terry Myers (#736)
9463 Benbrook Blvd. #114
Benbrook, TX 76126-3235 – USA
TMyers6497@aol.com

Secretary:

Alessandro Artini (#2451)
Via C. Baroni 210
I-20142 Milano – ITALY
althinkart@yahoo.com

Vice President for Charitable Services:

Richard Rizzo (#2215)
18300 Winter Park Court
Gaithersburg, MD 20879-4626 – USA
poly76ce@aim.com

Vice President for Public Relations:

John Seidl (#1646)
4324 Granby Way
Marietta, GA 30062-8150 – USA
jseidl@mindspring.com

ISWSC Director:

Duncan Koller (#2154)
844 NE 73rd Ave.
Hillsboro, OR 97124 – USA
duncankoller@comcast.net

ISWSC Director:

Jeff Schumer (#2101)
1010 Fallscroft Way
Lutherville, MD 21093-1706 – USA
jschumer@comcast.net

ISWSC Director and Immediate**Past President:**

Randy Smith (#1111)
P.O. Box 2085
Minneapolis, MN 55402-0085 – USA
rasmory4@frontiernet.net

AUCTION MANAGER

Everett King (#1389)
P.O. Box 130
Whitethorn, CA 95589 – USA
Ph: 707-986-7230
stamps@whitethorn.com

WEBMASTER

Rick Simpson (#1703)
HC79 Box 52-E
Romney, WV 26757 – USA
Ph: 304-822-3494
rsimpson@141.com

WHATZIT COORDINATOR

Richard Barnes (#2425)
11715 - 123rd Street
Edmonton, AB T5M 0G8
CANADA
barnes@interbaun.com

SALES CIRCUIT

Manager (U.S.): John Baumert (#1246)
P.O. Box 5574
Bloomington, IN 47407 – USA
jhbaumert@sbcglobal.net

OMNI CIRCUIT

Manager: Jim Millette (#1314)
8901 Marcel Cadieux #207
Montreal, PQ H2M 2L9 – CANADA
jmilllett@globetrotter.net

Co-Manager: David Paul (#59)
2 Heritage Drive
Belchertown, MA 01007 – USA

Co-Manager: Thomas Pomaski (#410)
8195 National Drive
Melbourne, FL 32940 – USA
stamper10@earthlink.net

Co-Manager: Dale E. Harris (#2311)
212 Schofield
Reedsport, OR 97467-1366 – USA
harrisda@ohsu.edu

SWAP CIRCUIT

Coordinator: Randy Smith (#1111)
P.O. Box 2085
Minneapolis, MN 55402-0085 – USA
rasmory4@frontiernet.net

Large I Circuit: John McArthur (#768)
14 Stonebrook
Lawton, OK 73505-9599 – USA
jmmcarthur@earthlink.net

Large II Circuit: John Seidl (#1646)
4324 Granby Way
Marietta, GA 30062-8150 – USA
jseidl@mindspring.com

Small/Definitive Circuit:
Randy Smith (#1111)
P.O. Box 2085
Minneapolis, MN 55402-0085 – USA
rasmory4@frontiernet.net

CTO Circuit:

William Silvester (#1058)
378C Cotlow Road
Victoria, BC V9C 2G1 – CANADA
wgsilvester@shaw.ca

Super Circuit:

Robert Armstrong (#1392)
2209 SW Oak Ridge Rd.
Palm City, FL 32990-2159 – USA
googiepox@adelphia.net

USA Circuit: Larry Veverka (#2363)
935 University Street
Walla Walla, WA 99362-2342 – USA
veverka@charter.net

*Mail or e-mail your questions to the
appropriate volunteer. Please include a self-
addressed stamped envelope or IRC for a reply.*

REGIONAL REPRESENTATIVES

Represent the ISWSC, distribute stamps to youth programs in their region.

Australasia: Noel Routley (#1610)
C/o Post Box 166
Koondrook 3580 – AUSTRALIA
routley@netcon.net.au

British Isles: Karen Rose (#584)
47 Heron Road — Oldbury
West Midlands B68 8AG
GREAT BRITAIN – U.K.

Canada: William Silvester (#1058)
378C Cotlow Road
Victoria, BC V9C 2G1 – CANADA
wgsilvester@shaw.ca

Cuba: Cleto Sánchez (#1311)
P.O. Box 2222, CP-10200
Havana – CUBA

Eastern Europe: Jan Szpyrka (#539)
ul.Srebrna 29
PL-44121 Gliwice – POLAND
szpyrka@zeus.polsl.gliwice.pl

Scandinavia/Baltics:

Vacant

Western Europe:

Vacant

STAMP ANSWERMAN

Myron Wambold (#2403)
E&M Etcetera
P.O. Box 2563
Inverness, FL 34451-2563 – USA
myronnw@tampabay.rr.com

NEWSLETTER EDITOR

Jennifer Arnold
2390 Willow Street
Lebanon, OR 97355 – USA
Ph: 541-990-9686
Fax: 541-259-4658
pizzazz@cmug.com

*Please remember that the Editor does not mail out The Circuit.
If you have any questions about your Circuit mail service,
please contact Terry Myers. Thank you!*

**DEADLINE
FOR THE
NEXT
ISSUE:**

JULY 20, 2007

The Reasons Why

by Col. Charles B. Leavenworth (#422)

Please accept my resignation from ISWSC. I no longer collect and thanks in part to the efforts of the club's sales circuit, I have finally disposed of a collection which I started 78 years ago at the age of 10.

In view of your job in ISWSC, you might be interested in the factors which led me at long last to give up the hobby which over the years gave me so much pleasure.

My children and grandchildren had no interest in continuing in spite of numerous indoctrination sessions over the years.

Increasing "commercialization" turned me off. I recently was surprised when surfing through the 2006 Scott's to see the prices for recent sets, multiple issues, and per stamp values of \$5, \$10 and \$20. Without a doubt, it must cost a huge sum to collect worldwide year by year.

Over the last 15 years, a series of criminal acts not limited to theft, fraud, conspiracy by not one but a number of our more prestigious auction houses and dealers has not helped.

Forgotten by many, but not to be ignored, was the fraudulent activity by two of the big U.S. stamp clubs. The loss or theft of \$1,000's of sales and exchange circuit material was in one case just brushed aside and the club suspended operations. The obvious commercial interests of candidates for office in a second is hard to accept.

The hobby seems to be dying for want of new blood. A major factor I believe is the overall mental attitude of the younger generations. Based on my volunteer involvement in the grade school arena, I have observed a total lack of interest, let alone knowledge of reading, history or geography. All of which are key factors in stimulating interest and maintaining proficiency in the hobby.

78 years of collecting didn't put much money in the bank, but it did provide a few delightful memories, such as:

- Saving up a 15¢ a week allowance to purchase at the Post Office a 65¢ Zepp.
- Starting a dozen or more young people with a pack of stamps, tongs, and some hinges.
- Searching out remote one room Post Offices in rural NJ in 1955 and 1956 to find \$1, \$2 and \$5

Continued on page 6

Dues/Advertising Policy

Dues Information:

Single/Dealer/Club 1 yr. membership: \$15.00*

Single/Dealer/Club 2 yr. membership: \$27.00*

Single/Dealer/Club 3 yr. membership: \$39.00*

Youth 1 yr. membership (under 18): \$12.00*

*Plus 250 large commemoratives for the Youth Program or equiv. donation in US\$. Dues include six newsletters per year. You may sign up for up to three years at a time. For an application or further information send SASE or IRC to: ISWSC, 9463 Benbrook Blvd. #114, Benbrook, TX 76126, USA.

Advertising Policy:

For reasons of accountability, only members of the ISWSC, APS or ASDA may place ads. All ads dealing with philatelic concerns are acceptable. We reserve the right to edit out objectionable language. Advertisers are expected to respond to all inquiries, so be sure you can handle the responses before you offer to trade, buy or sell. If you have a bad result from answering an ad, contact the Editor. We will try to resolve the conflict.

Display Rates (Camera Ready*) per insertion:

Full page: \$75.00

Half page: \$40.00

Quarter page: \$20.00

Per column inch: \$5.00

Six repeat insertions of the same ad for the cost of five ads (one free). We will also offer a two-sided insertion for \$125 per issue.

*Camera Ready means ready to paste up or scan and print. Reductions and typesetting extra.

Classified Rates per insertion:

First 30 words, including name, address, and ZIP Code are \$3. Additional words are 20 for \$1.

NOTE: State abbreviations = one word; "P.O. Box 1234" = two words; ZIP Code = one word.

Make all checks payable to ISWSC in U.S. funds. Send text and payment for ads to the Editor. All addresses can be found on page 2.

Transfer Roll Variants in U.S. Stamps

by Bill Kiepura (#503)

The Scott Catalog has a good outline of how varieties can happen when the transfer roll is made for the production of stamps printed by the engraved process. This article will give you a better idea of what goes into the making of the plate.

The transfer roll is made of steel and hardened before it is used in the production of the plate. At times, the steel is of poor quality and is unable to take the pressure needed to make the plate impression. Since the transfer roll has the stamp design just like the finished product, the lines that appear on the printed stamp are raised on the roll. When these break, there will be a white space on the printed stamp.

It is impossible to make such varieties by working on the original die. On the original die, the lines that appear on the stamp cut into the die. Space that appears white on the stamp are the original surface of the die. Since the lines are raised on the transfer roll, any break in the steel will result in a white space on the stamp.

Examples of this are not too common. I know of just one in a foreign stamp, although there may be many, many more. Scott does not list such varieties for non-US stamps. This variety is common on the Penny Black stamp from Britain and on the Penny Browns. There appear to be several transfer rolls used to make these plates. For example, plate 1a for the Penny Black has a ray flaw in the upper left corner. But six impressions on this plate have no flaw.

In plate 1c, the experts have concluded that there was a transfer roll used that had blank corners that was used to make re-entries on the original plate. On plate 2, 55 of the 240 stamps are normal and the rest have a new ray flaw. On plates 7-10, a new flaw shows up in the "O" which by the time it is finished appears to be a "Q". Plates 48-52 have new flaws which appear in the E and T. New ray flaws show up from time to time.

In US stamps, there have been a few transfer roll flaws and all but one or possibly two are listed in the Scott Specialized Catalog. The first is the

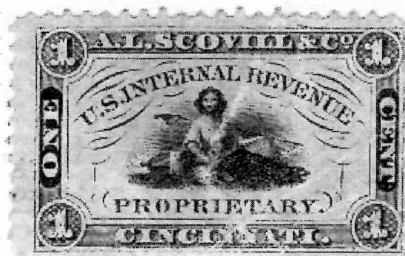
flaw in the design of the 1 cent 1851 shown in the catalog as illustration A6 and listed as Type 1a. The next variety would appear to be the "cap on the 2" variety on the 2 cent 1890. The two varieties can be found in pairs and it would appear that a two subject transfer roll was used. This is a progressive break in the roll.

Next we find two breaks on the 2 cent Columbian, the broken hat and the broken frame line. Again, both are progressive. I believe there is a break in the triangle on the 1894 series but I have nothing in my files on this.

The last listed variety is the broken circle on the 5 cent Walloon. This is found on just four stamps and again is a progressive variety. As might be expected from the few plate positions, it is very scarce.

Finally, I offer a new variety, the Match and Medicine 1 cent Scoville left frame line. Oddly enough, the broken frame is normal and probably happened before the first

impression of the plate. Examination of over 600 copies of this stamp did not turn up one copy with the full frame. As far as I know, this is the first publication of this variety. It is illustrated here, a *Circuit* first?



A new variety: the Match and Medicine 1 cent Scoville left frame line.



Articles Needed

As an ISWSC member, you are encouraged to contribute to *The Circuit* because each member has his/her unique perspective to collecting worldwide stamps. Please consider writing an article about your specific area of interest. Be sure to include your name and member number when submitting material for publication in the newsletter. You can contact the editor at the address listed on page 2.

Selling Your Collection?

It's a serious decision.

Deal with a company that takes your decision seriously.

Nutmeg Stamp Sales

buys outright, always considering the value from the buyer's point of view. There are

- ❖ NO consignments ❖ NO auction fees
- ❖ NO unsold lots
- ❖ NO delayed payments of unknown amounts

Nutmeg takes care of sales and marketing. We decide when the lots go to market, so you don't have to worry if the market is up or down on the day of the sale.

We aggressively purchase a wide range of philatelic items and we are always interested in seeing collections. All holdings are important, regardless of size.

Call us today at
1-800-522-1607
to discuss the future of your collection.

• P.O. Box 4547 Danbury CT 06813 • Fax: 203-798-7902
• Email: info@nutmegstamp.com

How I Collect the World

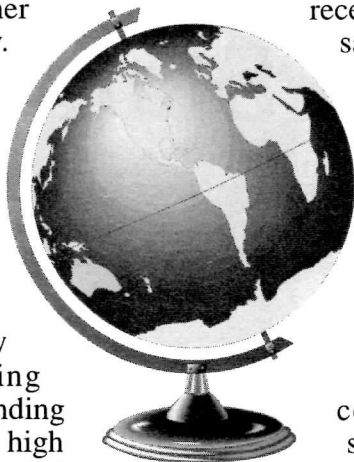
by Robert Armstrong (#1392)

On a very soggy Saturday morning, I thought I would let you know how I collect the world. Early on, I decided that I wanted to stay with the Scott International Albums.

As I added years to these albums, I quickly got tired of jumping up to grab another album to find issues of the same country. So, I broke down the albums by country. This immediately presented a problem that many stamp collectors are familiar with. The earlier Scott Albums have countries, and sections of countries, on back-to-back pages.

This started a photocopying process that is still on going many years later. The "new" country collections are in black three-ring notebooks, 1", 1½", and 2" thick, depending upon the number of pages. I then did ½" high computer printouts of the country names and slid them into the transparent spine of the notebook. Lastly (shudder), I purchased all of the MNH United Nations issued flags of member countries and cut out the flags and pasted them into the transparent spine of the notebooks. It all looks very nice, if I do say so myself. As far as the Scott International pages are concerned, I have through 1990. They are very expensive, as I'm sure everyone knows.

I have belonged to multiple stamp clubs in the greater Washington/Baltimore area and now the Hollywood (FL) Stamp Club and the St. Lucie Stamp Club in South Florida. The Hollywood (FL) Stamp Club is known as an excellent place to buy stamps and the St. Lucie Stamp Club is known as a good place



to sell stamps. In addition, I participate in practically all of the ISWSC activities. Fellow ISWSC member Bill Kiepura has been an excellent source of inexpensive stamps.

I now have approximately fifty (50) "trading partners" located throughout the world. This has gotten way out of hand, but it's fun and I receive recent stamps on cover. A lot can probably be said about international trading partners.

Often times their requests for stamps can be somewhat impractical. I have received requests like "MNH stamps picturing animals only" or a request from the fellow from Slovakia who has upgraded his requests to include coins and uncirculated banknotes - like very fine flying eagle, Indian head, and 3 cent coins from the nineteenth century.

There are a lot of international stamp collectors who are anxious to "trade" stamps. In my opinion, I think that this is where the ISWSC membership growth potential is, but that's a different story.

Last but not least (and I almost hesitate to confess to this), I participate quite actively in "The Forever Stamp Exchange." As manager of the ISWSC Super Swap Circuits, I put a little penciled tick mark on the stamps I send out. Those returned with the tick mark get sent to "The Forever Stamp Exchange" people, for the most part.

That's about it. A few hours per day, yes. Our extensive flora suffers, yes. My wife complains, yes.



The Reasons Why

Continued from page 3

plate block "Prexies."

- The satisfaction of assembling (not high \$ wise) a near complete collection of Italy and Colonies, Peru, Uruguay, France, Great Britain and a pre-1942 worldwide.
- Enjoying and profiting from the dedication and extreme professionalism of the large number of volunteers who served in the many stamp clubs, such as yours, that I participated in over the years. This unique participation may well

keep the hobby going.

- Contact with and the warm feeling resulting when — either face to face or via correspondence — you realize that your correspondent is a knowledgeable, concerned honest fellow collector who just wants to "talk stamps" and not make a buck.

All in all, for 78 years it was interesting, challenging, fun, confusing, profitable (?), a conversation starter, a relaxation, a spouse antagonist, but best of all, an identifier: "He is a stamp collector."



Western Sahara

by Richard Barnes (#2425)
From the *Edmonton Stamp Club Bulletin*
(Volume 89, Number 11)

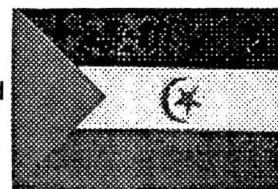
Most philatelists are familiar with the stamps of colonial Spain that were issued between 1886 and 1976 for Spanish Western Sahara, Spanish West Africa, Ifni, Rio de Oro and La Agüera. On today's maps, this area of northwest Africa is marked out as Western Sahara.

Following the death of Spain's dictator General Francisco Franco, the government of King Juan Carlos I was able to disengage Spain from its African colonies in 1976.

In 1976, a compromise was reached dividing Western Sahara — this sparsely populated, mineral-poor chunk of desert and mountains — between Morocco and Mauritania. Mauritania is credited as being the poorest country in Africa, so when wily old King Hassan II of Morocco sent unarmed Moroccans over the border to occupy the southern half of Western Sahara,



Red



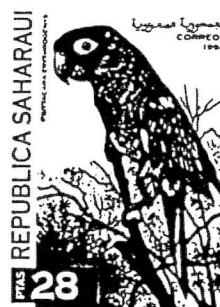
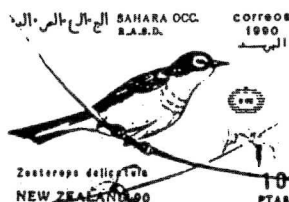
Black

White

Green

Coat of Arms and flag of the Saharawi Arab Democratic Republic

haven supported the rise of the Polisario Liberation front, a movement of resistance to Moroccan rule in Western Sahara.

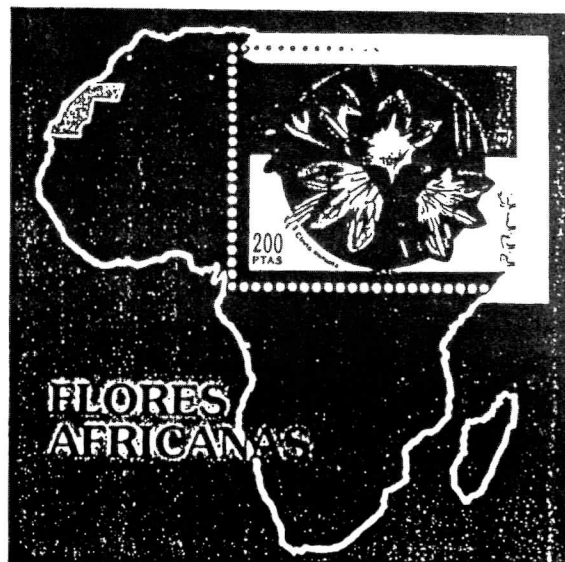


Stamps were printed as a source of money and as a visual representation to the world of resistance in Western Sahara. Originally, the stamps were said to emanate from

Western Sahara, but from 1997, the name has changed to Saharawi Arab Democratic Republic. The fine quality stamps, of course, cover all kinds of topics that interest collectors — birds, flowers and aircraft.

[For more information on the Saharawi Arab Democratic Republic, including a good map showing how the territory of Western Sahara is divided between it and Morocco, see <http://www.arso.org/index.htm>. Ed.]

I would appreciate any further information on these stamps, stamp listings, etc., from any ISWSC Club member.



Mauritania could only object. The world did not care.

Mauritanian pride was hurt. Algerian foreign policy conflicted with the more moderate policies of King Hassan. Mauritanian blood, Muslim fundamentalism and Algerian money, arms and safe

Moving?

Please help us to keep your address current. We don't want you to miss your next issue of *The Circuit*! If you have moved recently or plan on a move soon, please send your change of address by mail or email to:

Terry Myers (#736)
9463 Benbrook Blvd. #114
Benbrook, TX 76126 – USA
TMyers6497@aol.com

Ain-Tab

by Richard Barnes (#2425)

From the *Edmonton Stamp Club Bulletin*
(Volume 92, Number 11)

I provide the local postman with job security. To assist with this noble purpose, I receive a substantial number of stamp auction catalogues. Many are from small auction houses that do not specialize in my collecting area of interest.

I have been looking for Ain-Tab stamps for 23 years. This summer, from an Australian auction house specializing in the South Pacific and Commonwealth, were three different lots, each of one Ain-Tab stamp. These bids were a bit over She Who Must Be Obeyed's idea of my stamp allowance. However, auctions are always a bit of a gamble. Surprise, delight and a lump in my stomach flashed in me when I opened the registered packet and saw all three Ain-Tab stamps. I have had fair success at such auction houses. I could well be the only bidder for these lots among the regular clientele of commonwealth collectors.

The official end of World War I and the end of official fighting between the western powers and Ottoman Turkish forces came with the Armistice of 1918, which was formalized by the Treaty of Sevres. Turkish nationalists refused to accept the

occupation of Turkey by foreign troops and the reimposition of special privileges to the European powers, both of which were imposed by this treaty.

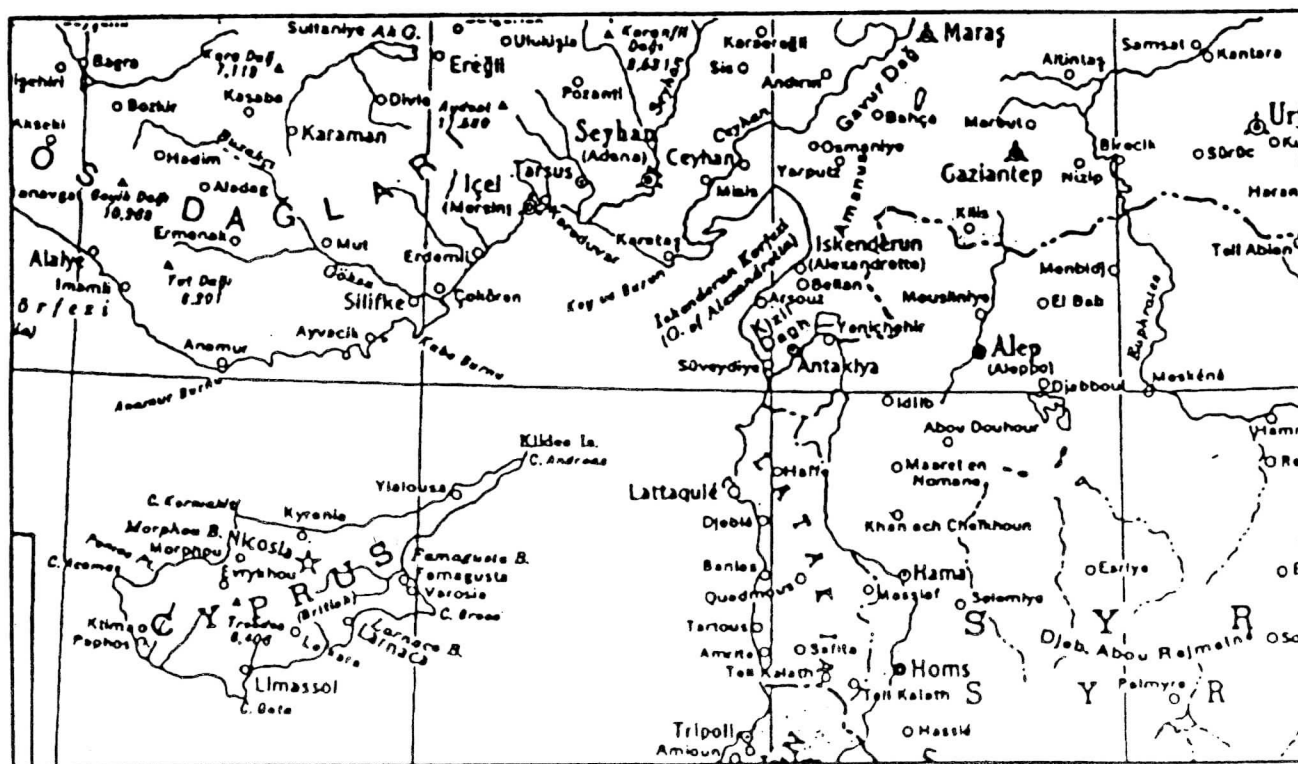
The French occupied the area of Cilicia (the area between the Taurus Mountains and the Mediterranean Sea) in southwestern Turkey. They extended the boundaries of this province to include the southwestern region of Turkey bordering on Syria. The French troops who moved into this mountain area were strenuously opposed by Turkish nationalist forces under command of Mustafa Kemal Atatürk.

It was only in 1921 that the French had the forces necessary to enter this area. (The main opponents to the Turks, and the more important struggle for them, was with the Greeks in the north and west of Turkey.) Cilicia was a secondary front for the Turks, but they were able to keep the French from establishing effective control.

The largest city in this region just north of Syria occupied by the French in 1921 is the present-day city of Gaziantep or Ain-Tab (see map). Ain-Tab is the Arabic name of the city, Gaziantep is the

Continued on next page

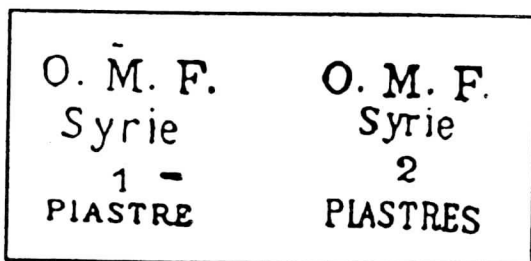
↓ Gaziantep
or Ain-Tab



This map shows modern borders between Syria and Turkey.

Ain-Tab

Continued from page 8



The two Ain-Tab overprint types.

Turkish name. This city gives its name to a set of eight stamps with "O.M.F." (Occupation Militaire Francaise) which was overprinted on Turkish stamps that the French found in the city in 1921. It was necessary to use these



The three Turkish stamps overprinted for Ain-Tab.



overprinted stamps because the communication problems of the French precluded the use of the expected Cilicia stamps. Information and point of



view for this area and time period is contradictory. Ain-Tab, with a majority of Armenian and Kurdish citizens, welcomed the French. The French had to besiege the city for 11

months to take it from the Turks. The Armenians massacred the Muslim Turks while a little later the Turks massacred Armenians and Kurds.

In late 1921, a truce was established between the French and the Turks. Civilian mail in this Turkish region north of Syria after the truce seems to have gone through the Turkish mail system. The Treaty of Lausanne of 1923 formalized the successful removal of colonial influences within the boundaries of modern day Turkey.

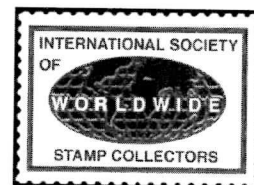
The eight stamps of Ain-Tab are a reminder of one violent incident of "The Great Game" played it the Middle East.



Promote ISWSC

Continued from page 1

Join the...
International
Society of
Worldwide
Stamp
Collectors!



The ISWSC has over 500 members around the globe who enjoy collecting the world. How about you? Whether a beginner or advanced, young or not so young, you'll enjoy membership benefits like our bi-monthly newsletter, several swaps and exchanges, sales circuits, auctions, and more! All for just \$15 per year! Write to:

ISWSC, Terry Myers, 9463 Benbrook Blvd.,
#114 Benbrook, TX 76126-3235

See us on the web at: <http://www.iswsc.org>

To make it easy for you to inform your customers, one of our members (was it Tom Fortunato?) made up a mini-flyer several years ago that outlines our basic services. I recently updated it with current contact information and put it on our website as a PDF file. There are six of these flyers per page, so just go to our website and click on "ISWSC Promotional Flyers" on the front page to view them. Then click on Print and print as many copies as you want. Or photocopy the image shown here. Whenever you send something to a customer, just drop a flyer in the envelope or package as well. Perhaps your thoughtfulness will get us our next member!



Articles Needed

We need you... to submit an article or item of interest to *The Circuit*!! As an ISWSC member, you are encouraged to contribute to *The Circuit* because each member has his/her unique perspective to collecting worldwide stamps. Please consider writing an article about your specific area of interest.

Be sure to include your name and member number when submitting material for publication in the newsletter. You can contact the editor at the address listed on page 2.

Whatzit? – Research Fun

by Richard Barnes (# 2425)
Whatzit? Coordinator

I was provided with a battered cover and asked for an identification (fig 1). The cover still held the original typed enclosure:

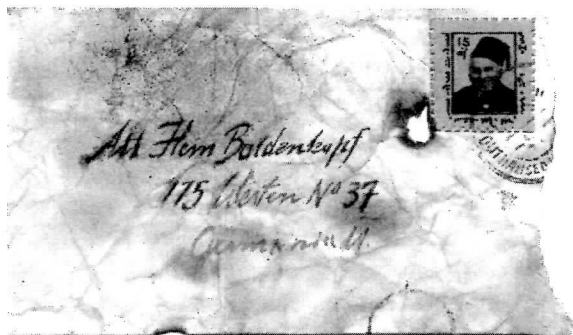


Fig. 1

"Dear George:

I'm not a stamp collector but it is known that just a few of these stamps were printed right after the revolution. I don't read Arabic, so I can't tell you what is written on it, or who the gentleman is. As you can see the corner of the stamp is damaged. My friend from Toronto is sure that this stamp may have some value. I have trouble finding this stamp in my catalogue.

George, please be very careful with this stamp and handle with utmost delicacy.
Edward"

I was honoured that I was entrusted with this valuable cover. I did not recognize the person on the stamp. The clothes and headdress reminded me of a Fascist uniform from the Baltic Region. This thought cannot be correct as the envelope is addressed to West Germany.

I looked closely at the stamp and cancel under high magnification (fig 2).

The hand cancel is unique being bicoloured. I translate the German language cancel as coming from a location named Outhouse. Can it be that all doors in this town have quarter moons on them? The bust of the man is composition of dots as would be manufactured on a dot matrix printer. This figure was cropped creating odd ear shapes then printed on orange paper. The fez, crude writing, numbers and



Fig. 2

box lines were hand applied with a felt marker. Am I correct in believing that the unidentified individual depicted on this stamp is personally known by some members?

The provenance is correct. I am certain that only a few of these stamps were made. There is a revolution seemingly every day somewhere so most likely it was made after a revolution. This cover has been abused, stained and burned yet it does have some value. Value as a fun item in a collection. If I had this item in my collection I would be very careful with this stamp and cover.

Fig 4 from the previous issue of *The Circuit* (Vol. 25, No. 3) was published upside down. Both Whatzits from this same issue were identified by members. Fig 6 is a Scott #B1 or Michel: Deutsches Reich #105. I cannot help it but must correct the Scott catalogue.



Fig. 4



Fig. 6

Others also translate the overprint as For War Disabled or Victims of War and not as stated in Scott's For War Wounded. Fig 7 is a Polish Charity Stamp issued just after WWII, 1946 or 1947.

The top of the stamp reads Charity for the Reconstruction of Health Spas and at the bottom for Postal and Telegraph/Telephone Workers i.e. Post and Telephone Z.Z.PAAC.

I appreciate the assistance I am receiving from members who provide Whatzits and take time to identify unknown stamps.



Fig. 3

The first unidentified stamp (fig 3) is a yellow 10? German private post stamp. We need the company, date of issue, value and any other information.

The next Whatzit is a British Empire revenue (?) stamp (fig 4). This 2 shilling grey/blue stamp has a revenue cancellation. Any



Fig. 7

Continued on next page

Whatzit?

Continued from page 10

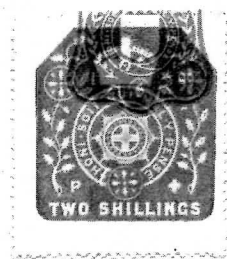


Fig. 4

information of the purpose of this stamp, confirmation of country of origin, time used, etc is needed.

The last stamp is a two cent red from the Philip-

pines (fig 5) that we could not find in Scott's. Has any member information on this stamp?



Fig. 5

I did not think it possible but I am coming close to the last of my unidentified stamps on my desk. I need the assistance of members for this column. Please send me a scan or mail me your unknown stamps. Members must have some. I will promptly return your stamps to you. Both members and I enjoy reading about your search to identify unknown stamps. If you have made a search, please share your experience with us.

Richard T. Barnes
11715 - 123rd St. NW
Edmonton, AB T5M 0G8
CANADA

Or via e-mail at barnes@interbaun.com



Membership Update

New Members

#2534U Kathy Cullen (exp. 3/31/2010)
5 Eastview Road
New Fairfield CT 06812-2902 — USA
yhtak01@hotmail.com B(1840-1960),G, DD,Int(10),
ships,birds,stamps on stamps

#2535 Paul Scroggie (exp. 5/30/2008)
507 N. Brower #1
P O Box 1471
Medical Lake WA 99022-1471 — USA
A,E,Beg(25),DD,space, sports, butterflies

#2536 James Fattaleh (exp. 5/31/2008)
65 M Ridge Road
Greenbelt MD 20770-1736 — USA
jtfat@msn.com A,D,Int(52),DD,4,5

#2537 Tim Seth (exp. 5/31/2008)
2313 Springer Lane
Olympia WA 98506-1020 — USA
B(to 1980),C,D,E,F,G,Int(10),EE

#2538 William Stover. M.D. (exp. 5/31/2010)
PMB 405 2522 N. Proctor
Tacoma WA 98406-5338 — USA
smoke1789@gmail.com A,G,Adv(55),DD,1,3,4,5

#2539 Dennis Parker (exp. 5/31/2008)
699 CR 429
Novice TX 79538-2003 — USA
G,Adv(55),EE,Albania,UK 95 to date, turtles, Japan coils

Address Changes/Corrections

#436 Boneham 7820 Stonewall Run
Fort Wayne IN 46825-3584 — USA
#1398 Palazzolo 2667 State Highway 413
Billings MO 65610-9220 — USA

E-mail Address Changes/Corrections

#436 Boneham ft_wayne@hotmail.com
#2171 Banks banksb@bellsouth.net
#2454 Werner wernerone@netwtc.net

Interest Corrections

None.

Resigned

None.

Returned Mail – Unknown Address

#2189 Len Gellamn

With a large membership, our records are always being updated (phone numbers, APS and ATA membership numbers, and age). We'd like your assistance in improving the data base, so send this information by mail or email to:

Terry Myers (#736)
9463 Benbrook Blvd. #114
Benbrook, TX 76126 – USA
TMyers6497@aol.com

ADVERTISING

Classified Rates Per Insertion

First 30 words, including name, address, and ZIP Code are \$3. Additional words are 20 for \$1. NOTE: State abbreviations = one word; P.O. Box 1234 = 2 words; ZIP Code = one word. Make all checks payable to ISWSC in U.S. funds. Send text and payment for ads to the Editor (address on page 2).

TRADE MY USED U.S.A. commems for your space, sports, butterflies or large foreign. Send offers. Paul Scroggie (ISWSC #2535), P.O. Box 1471, Medical Lake, WA 99022-1471 — USA. [7-8/07]

MALTA 120 DIFFERENT used stamps in good condition. Sets and many high values. US\$12 cash postpaid. Mr. Joseph Farrugia (ISWSC #690), "Biancaville", Philip Farrugia Street, Zurrieq ZR0-2263 — MALTA [5-6/08]

NEED 20¢ STAMPS – THE ONES MOST dealers refuse to show you? I will send you 100 grams at 5¢ per stamp. W.T. Kiepara (ISWSC #503), P.O. Box 333, Soledad CA 93960. [11-12/07]

BREAKING UP 60-YEAR ACCUMULATION. Let me send you a stuffed envelope of old, new, mint and used, etc. Pick what you want at 1/3 SCV and return the balance. Gelfman (ISWSC #1849), Box 315, Old Bethpage, NY 11804 USA. [9-10/08]

CLEARING OUT COLLECTIONS at 20% of Scott! Free lists. Darrell L. George (ISWSC #635), 19410 Cantrell Road, Little Rock, AR 72223 USA; email dlgstmps@aol.com. [11-12/07]

PAYING FULL CATALOG for stamps valued 20¢–\$1.00 any country with readable cancels (place & complete date) 1880-1920. Robert Fisher (ISWSC #1608), P.O. Box 923, Penney Farms, FL 32079; rafstamps@juno.com. [9-10/07]

PAYING TOP PRICE for worldwide masonic stamps and covers. Sell or buy or exchange. E-mail: Rajus2001@gmail.com. Abdul Aziz (ISWSC #1589), A-32/146 Chittanpura, Varanasi-221001 — INDIA [11-12/07]

WORLDWIDE TOPICAL STAMPS, MS, FDCS, Maxcards available on Lions Club, medical themes, Masonic lodges, gems and jewelry, minerals, geology, reptiles, mushrooms, birds, flowers, animals, sports and many more. See with images on www.delcampe.net/stores/rajus2001; E-mail: Rajus2001@gmail.com. Abdul Aziz (ISWSC #1589), A-32/146 Chittanpura, Varanasi-221001 — INDIA [11-12/07]

I AM MRS P.R. GANGJI (ISWSC #2482). I am trading postal stationary, postal history, stamp, coin, banknote, phonecard of different countries. I will give India, Queen, Edward, George, postal stationary, postal history, stamps, also modern used and mint stamp of France, England, Denmark, Australia, Bulgaria, New Zealand, Ghana, Germany, DDR, Italy, Japan, Lithuania, Malaysia, Mongolia, Nepal, Netherlands, Nigeria, Poland, Russia, Romania, South Africa, Sweden, Spain, Switzerland, Turkastan, Transkei, Canada, Cuba, Hungary. Reply quickly on my e-mail address: prgangji@yahoo.com

You Wanna Know What????

by M. Wambold (#2403)

Have been getting some good questions so keep them coming. Remember, I can't answer all of them, but I can try to lead you in the right direction. Here is where you go:

http://www.iswsc.org/iswsc_stampman.shtml

and click onto "Ask the Stamp Answer Man a Question", which will lead you to where you can sign in to the Guestbook and ask away. I will normally answer within the week or sooner.

Thank you for your support and the interesting research problems.



Where to Send What

Membership Renewals, Applications, Changes in Mailing Address, Roster Changes, Etc:

Terry Myers (#736)
9463 Benbrook Blvd. #114
Benbrook, TX 76126-3235 – USA
TMyers6497@aol.com

Annual 250 Stamp Donations:

Richard Rizzo (#2215)
18300 Winter Park Court
Gaithersburg, MD 20879-4626 – USA
poly76ce@aim.com

Payments for Advertisements:

Jennifer Arnold
2390 Willow Street, Lebanon OR 97355-3064
Ph: 541-990-9686; Fax: 541-259-4658
pizzazz@cmug.com

Auction Bids & Lots and Payments:

Everett King (#1389)
P.O. Box 130, Whitethorn CA 95589
stamps@whitethorn.com

Text for Articles for *The Circuit*, Corrections for Articles: Send to Jennifer Arnold (see above) via USPS, fax or email. When emailing graphics for publication, please use a higher resolution (150 dpi). Please contact the Editor if you have any questions about format.